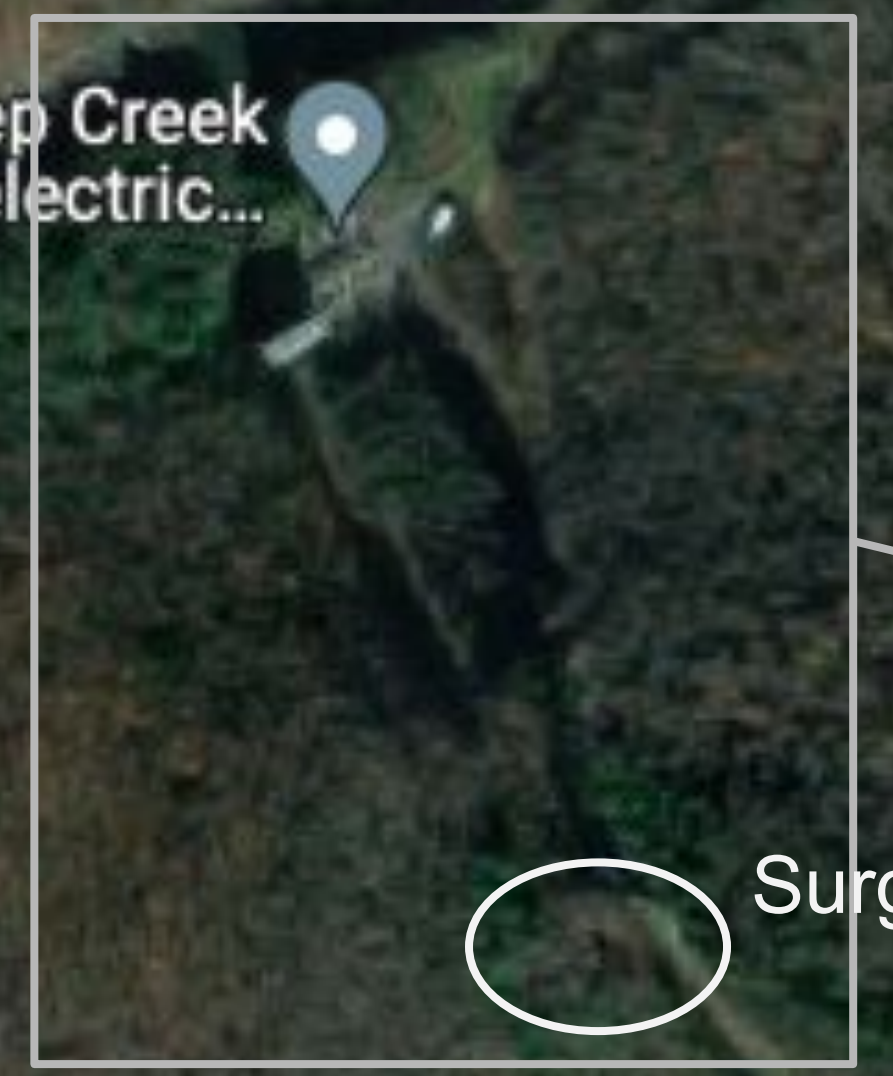


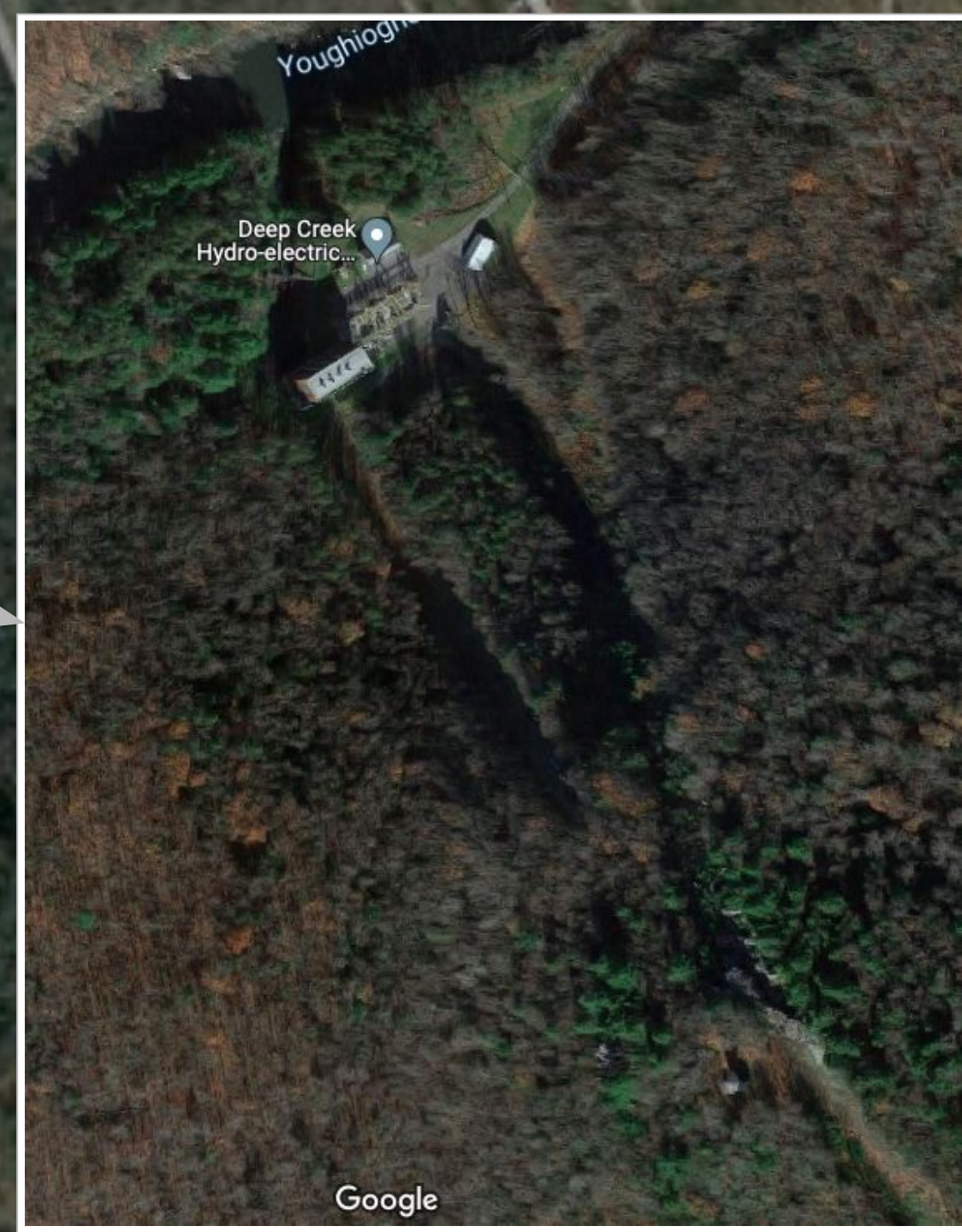
# Deep Creek Hydro-electric Project

Source: Brookfield Renewable Deep Creek Hydroelectric Project, MDE Dam No. 4, Permit Renewal Public Hearing Slide Deck, Oct. 15, 2019; Google Maps

Deep Creek Hydro-electric...



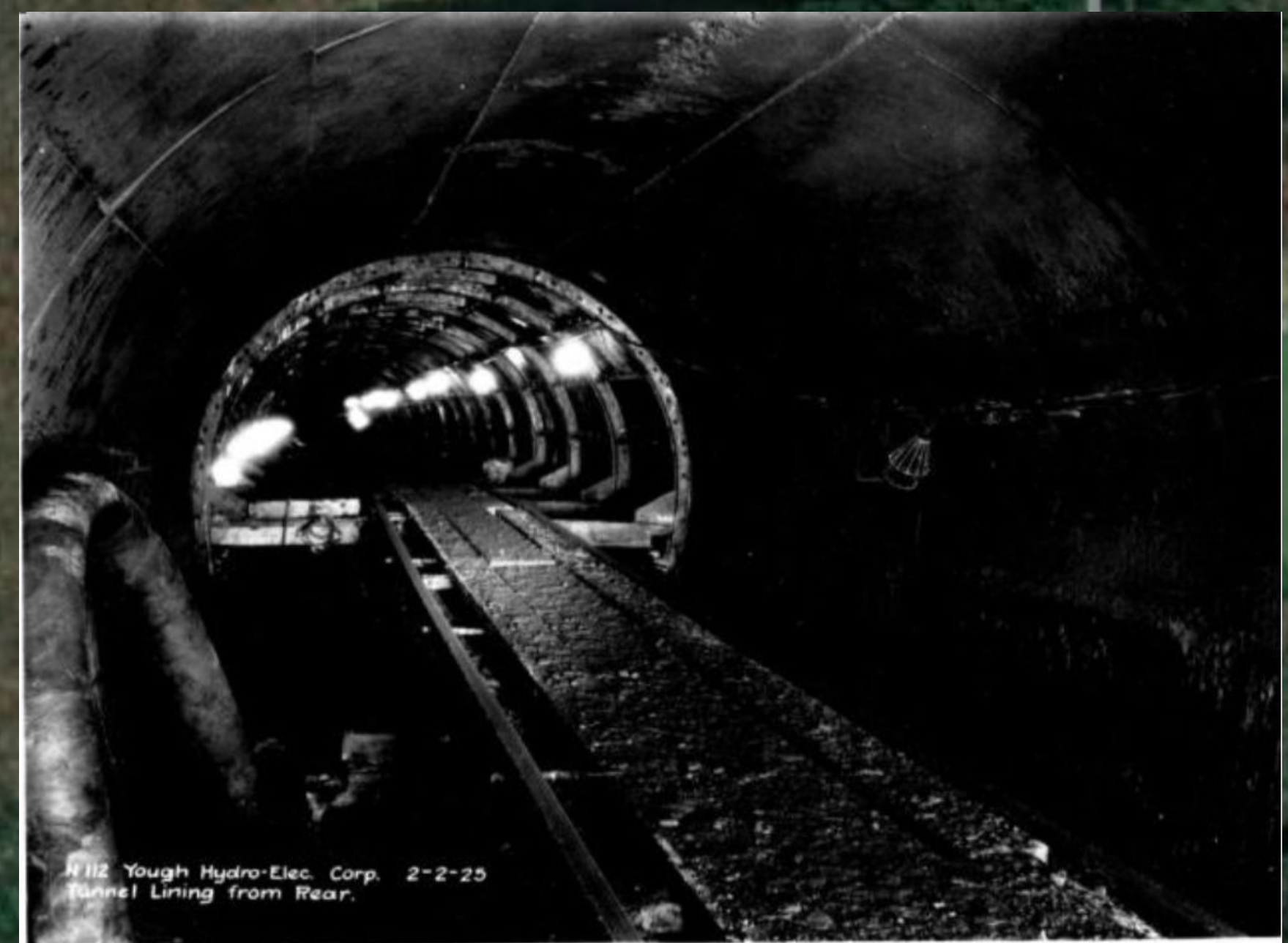
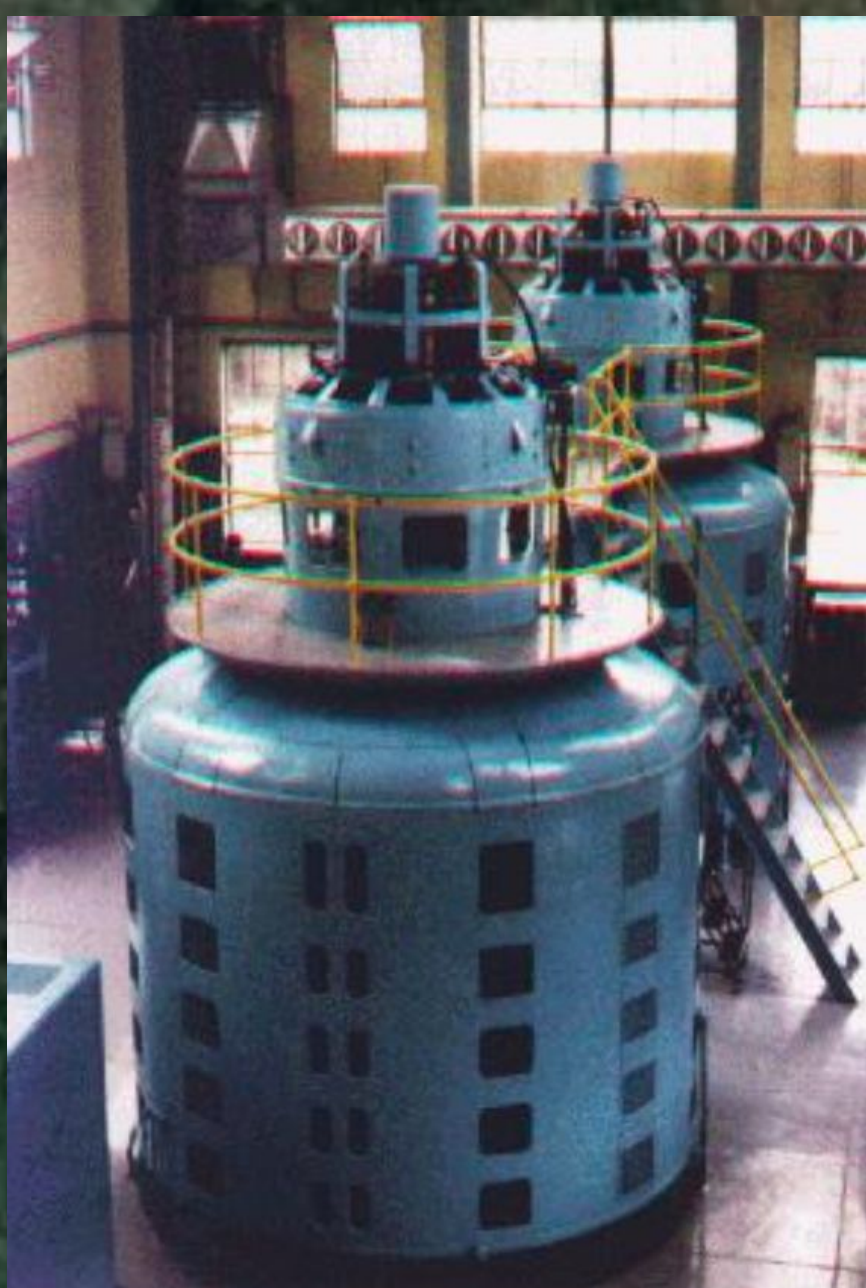
Surge Tank



Google

## Quick Facts

- A power tunnel (over 7000 feet in total length) conveys water from Deep Creek Lake to a three story brick powerhouse (438 feet lower in elevation) on the bank of the Youghiogheny River near Hoyes Run;
- The powerhouse is equipped with two Francis type turbines and two generators capable of producing about 18 megawatts of electric power;
- Powerhouse tailrace discharges up to about 630 cubic-feet-per-second to the Youghiogheny River;
- Technical Specifications of Water Conveyance:
  - Total length of water conveyance is 1.49 miles;
  - Gross Head - 433 ft.
  - Power Tunnel - Single concrete lined rock tunnel - 9 foot diameter, 6,652 ft. long from intake to surge tank;
  - Surge Tank Height -145 ft. (52' above ground), diameter - 30 ft.;
  - Penstocks - Two (2) steel pipes, 6' diameter, 757' long from surge tank to Powerhouse.
- Built in 1923-1925 by Penelec - Currently owned and operated by Brookfield Renewable Partners;
- Enough energy is produced to provide clean, renewable power to 2,500 homes annually.



©112 Yough Hydro-Elec. Corp. 2-2-25 Tunnel Lining from Rear.



Intake

Deep Creek Dam

